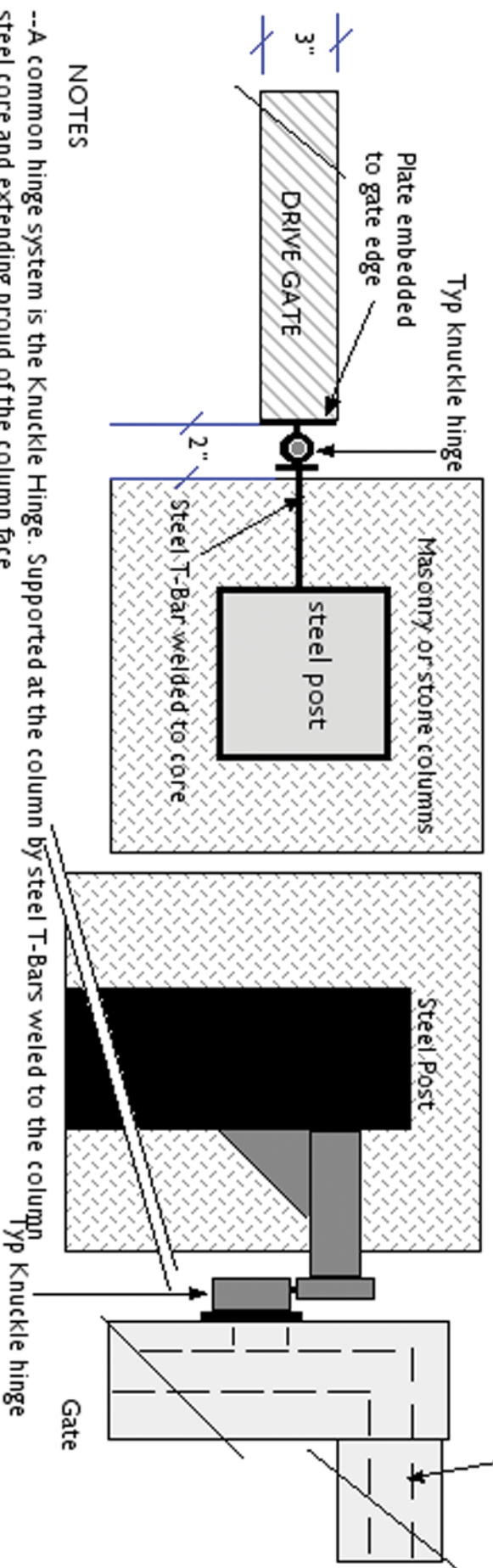


## Hinge Mounts #1

CHARLES  
PROWELL  
Woodworks



Embedded steel frame



### NOTES

- A common hinge system is the Knuckle Hinge. Supported at the column by steel T-Bars welded to the column steel core and extending proud of the column face.
- The opposing half of the hinge is welded to an exposed plate mounted to the gate's embedded steel frame.