

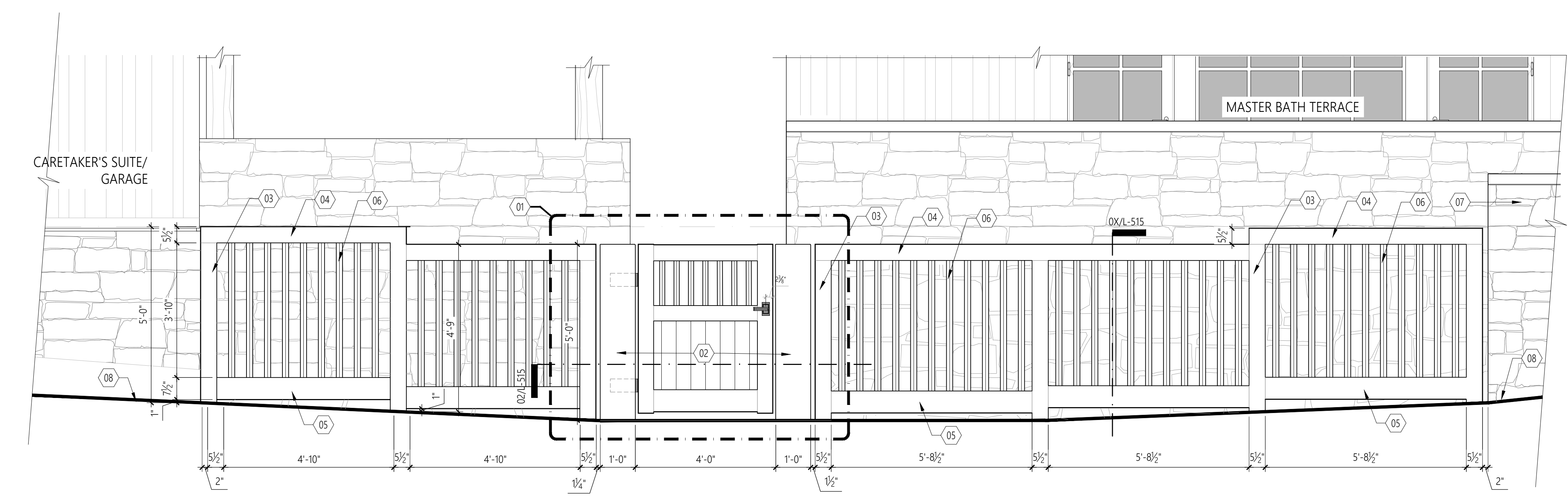
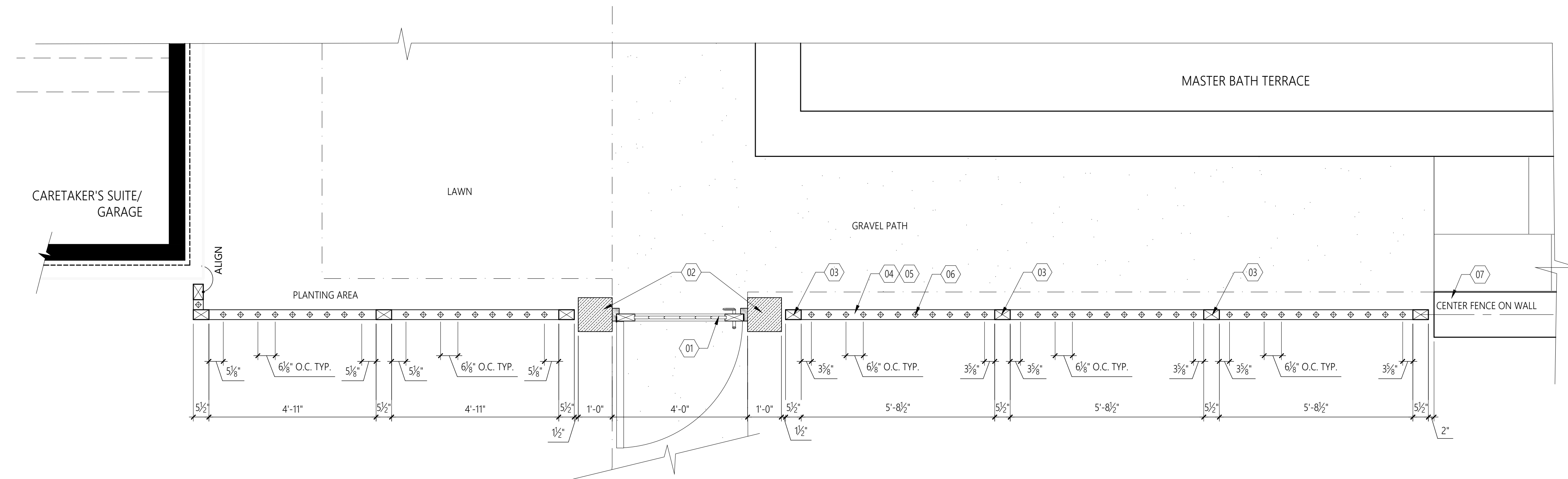
CONSULTANTS

ARCHITECT:
CHAS ARCHITECTS
PRINCIPAL: CHARLES TRAVIS
www.chasarchitects.com

INTERIOR DESIGNER:
PLUS TWO INTERIORS
PRINCIPAL: HILARY CRADY
www.plustwointeriors.com

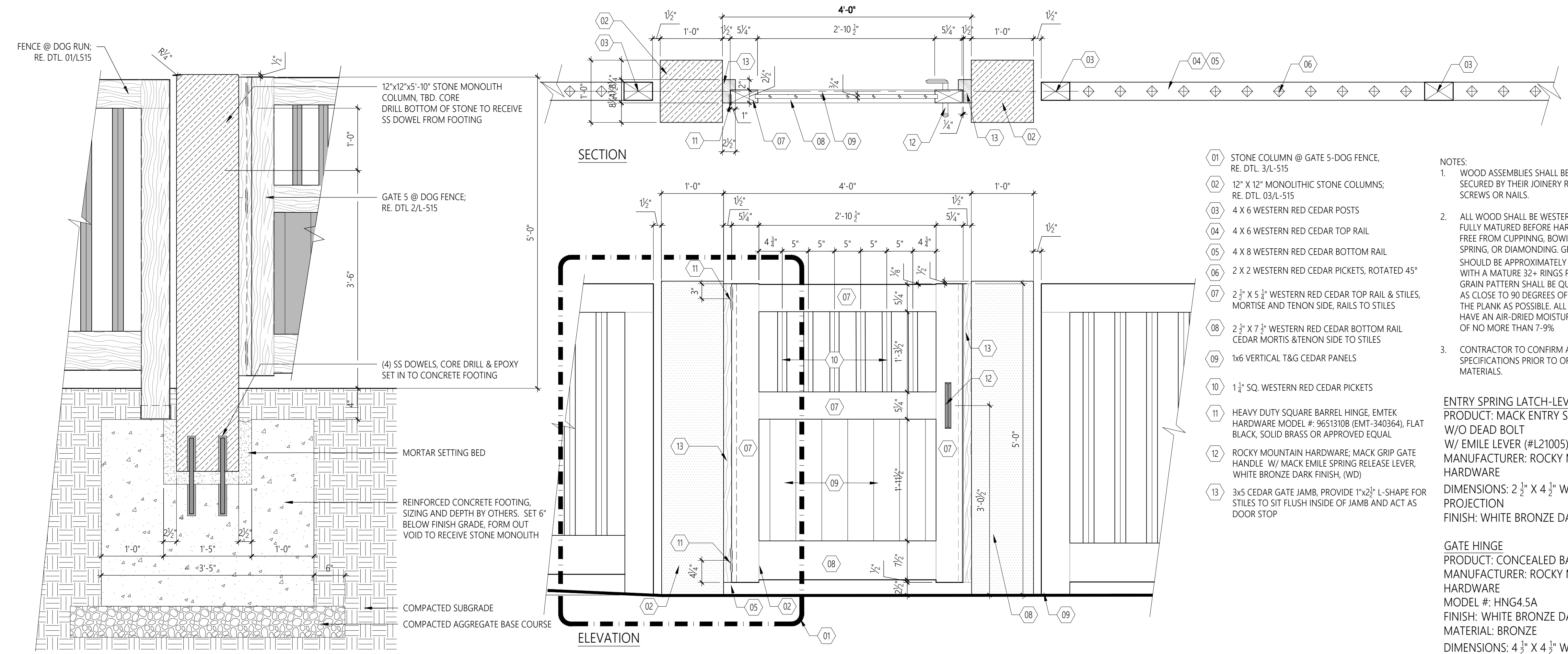
CIVIL ENGINEER:
PRC ENGINEERING
PRINCIPAL: RAY PEREZ
prceng.vercel.app

KEY MAP



- 01 GATE @ DOG FENCE. RE. DTL. 2/L-515
- 02 12" X 12" MONOLITHIC STONE COLUMNS. RE. DTL. 03/L-515
- 03 4 X 6 WESTERN RED CEDAR POSTS
- 04 4 X 6 WESTERN RED CEDAR TOP RAIL
- 05 4 X 8 WESTERN RED CEDAR BOTTOM RAIL
- 06 2 X 2 WESTERN RED CEDAR PICKETS, ROTATED 45°
- 07 STONE VENEER RETAINING WALL - CONDITION 4. RE. DTL. 04/L501
- 08 FINISH GRADE

1 GATE 5 W/ DOG ENCLOSURE FENCE
SCALE: 1/2" = 1'-0"



- 01 STONE COLUMN @ GATE 5-DOG FENCE. RE. DTL. 3/L-515
- 02 12" X 12" MONOLITHIC STONE COLUMNS. RE. DTL. 03/L-515
- 03 4 X 6 WESTERN RED CEDAR POSTS
- 04 4 X 6 WESTERN RED CEDAR TOP RAIL
- 05 4 X 8 WESTERN RED CEDAR BOTTOM RAIL
- 06 2 X 2 WESTERN RED CEDAR PICKETS, ROTATED 45°
- 07 2 1/2" X 5 1/2" WESTERN RED CEDAR TOP RAIL & STILES. MORTISE AND TENON SIDE, RAILS TO STILES
- 08 2 1/2" X 7 1/2" WESTERN RED CEDAR BOTTOM RAIL. CEDAR MORTIS & TENON SIDE TO STILES
- 09 1x6 VERTICAL T&G CEDAR PANELS
- 10 1 1/2" SQ. WESTERN RED CEDAR PICKETS
- 11 HEAVY DUTY SQUARE BARREL HINGE. EMTEK HARDWARE MODEL # 96513108 (EMT-340364). FLAT BLACK, SOLID BRASS OR APPROVED EQUAL
- 12 ROCKY MOUNTAIN HARDWARE, MACK GRIP GATE HANDLE. W/ MACK EMILE SPRING RELEASE LEVER, WHITE BRONZE DARK FINISH. (WD)
- 13 3x5 CEDAR GATE JAMB. PROVIDE 1"x2 1/2" L-SHAPE FOR STILES TO SIT FLUSH INSIDE OF JAMB AND ACT AS DOOR STOP

NOTES:

- WOOD ASSEMBLIES SHALL BE JOINED, SECURED BY THEIR JOINERY RATHER THAN SCREWS OR NAILS.
- ALL WOOD SHALL BE WESTERN RED CEDAR, FULLY MATURED BEFORE HARVEST AND FREE FROM CLIPPING, BOWING, TWISTING, SPRING, OR DIAMONDING. GROWTH RINGS SHOULD BE APPROXIMATELY 1/8" - 1/4" APART WITH A MATURE 32+ RINGS PER INCH. GRAIN PATTERN SHALL BE QUARTER SAWN. AS CLOSE TO 90 DEGREES OFF THE FACE OF THE PLANK AS POSSIBLE. ALL WOOD SHALL HAVE AN AIR-DRIED MOISTURE CONTENT OF NO MORE THAN 7-9%.
- CONTRACTOR TO CONFIRM ALL HARDWARE SPECIFICATIONS PRIOR TO ORDERING OF MATERIALS.

ENTRY SPRING LATCH-LEVER TO LEVER
PRODUCT: MACK ENTRY SET (#E21005)
W/O DEAD BOLT
W/ EMILE LEVER (#L21005)
MANUFACTURER: ROCKY MOUNTAIN HARDWARE
DIMENSIONS: 2 1/2" X 4 1/2" WITH 2 3/8" PROJECTION
FINISH: WHITE BRONZE DARK (WD)

GATE HINGE
PRODUCT: CONCEALED BARREL HINGE
MANUFACTURER: ROCKY MOUNTAIN HARDWARE
MODEL #: HNG4.5A
FINISH: WHITE BRONZE DARK (WD)
MATERIAL: BRONZE
DIMENSIONS: 4 1/2" X 4 1/2" W/ 3/8" BARREL

3 STONE COLUMN AT GATE 5-DOG FENCE
SCALE: 1" = 1'-0"

2 GATE 5 ENLARGEMENT
SCALE: 1" = 1'-0"

PRIVATE RESIDENCE
4545 SOUTH HOLLY STREET
ENGLEWOOD, CO 80111

SUBMITTALS

NO.	COMMENTS	DATE

REVISIONS

NO.	COMMENTS	DATE

SHEET INFORMATION

DATE
JOB NUMBER
DRAWN BY
CHECKED BY

GATE 5 DETAILS

L-521

